

Eswatini, Kruger & Wild Pafuri Walking Safari, South Africa

Experience the stunning landscapes of Eswatini and unparalleled walking through the remote wilderness of Kruger's far north.



Group departures

See overleaf for departure dates

Holiday overview

Style	Walking Safaris
Accommodation	Hotels, Lodges, Tented Safari Camps
Grade	Gentle
Duration	14 days from London to London
Trekking / Walking days	Walks on: 10 days (safari walks 7 days)
Min/Max group size	4 / 8. Guaranteed to run for 4
Trip Leader	Local Leader Swaziland & South Africa
Land only	Joining in Johannesburg, South Africa



Private Departures & Tailor Made itineraries available

tel: +44 (0)1453 844400 fax: +44 (0)1453 844422 info@mountainkingdoms.com www.mountainkingdoms.com

Mountain Kingdoms Ltd, 20 Long Street, Wotton-under-Edge, Gloucestershire GL12 7BT UK
Managing Director: Steven Berry. Registered in England No. 2118433. VAT No. 496 6511 08

Departures

Group departures

2025 Dates:

Mon 25 Aug - Sun 07 Sep

Group prices and optional supplements

Please contact us on +44 (0)1453 844400 or visit our website for our land only and flight inclusive prices and single supplement options.

No Surcharge Guarantee

The flight inclusive or land only price will be confirmed to you at the time you make your booking. There will be no surcharges after your booking has been confirmed.

Will the trip run?

This trip is guaranteed to run for 4 people and for a maximum of 8. In the rare event that we cancel a holiday, we will refund you in full and give you at least 6 weeks warning. Many trips do fill up quickly - we advise you to book early if you want to secure a place(s) on the dates of your choice.

Deposit and payments

A higher deposit is required to secure your booking on this holiday. For full details please contact the office or refer to our terms and conditions on our website <http://www.mountainkingdoms.com/essential-information>.

Insurance

We offer a travel insurance scheme - please contact us for details.

Private Departures

We can also offer this trip as a private holiday. A Private Departure follows exactly the same itinerary as the group departure but at dates to suit you (subject to availability) - please contact us with your preferred dates.

Tailor Made service

We pride ourselves on the level of quality and choice we provide for our clients who want a fully tailor made holiday. A holiday will be created especially for you by one of our well-travelled experts, who will have first-hand experience of the destination/s you want to visit. They will be able to advise on the accommodation best suited to your needs, the sights you should visit (and those to avoid!) and the best walks and activities matched to your ability. In short, we will work together with you to create your perfect holiday. If you would like to explore the idea of a Tailor Made holiday with Mountain Kingdoms then please call us on (+44)1453 844400 or see the Tailor Made pages of our website for further inspiration.

Your guide



Throughout your African adventure you will be escorted by an experienced local guide and a driver. If your group size is four there will only be one guide/driver.

Your walking and jeep safaris in South Africa are led by experienced, English-speaking guides based in each camp - the guides are highly knowledgeable and their expertise is broad. Specialists in their field, they have excellent knowledge of the terrain, bird and wildlife found in Kruger National Park. The quality of the guides on this walking safari will ensure that you get the most out of your safari experience.

On walking safaris you will also be accompanied by an armed guide.

Your trip highlights

- Step into the wilderness and spend five days exploring remote Pafuri in the far north of Kruger on foot - a unique safari experience.
- Track wildlife on guided jeep safaris and bush walks in a game-rich private reserve within southern Kruger National Park.
- Explore Eswatini's wonderful natural landscape with day walks in the Mlilwane Wildlife Sanctuary and Malolotja Mountain Reserve.
- Discover the colourful Swazi culture
- Stay in characterful accommodation including a beautifully located eco lodge, a historic mountain lodge, a boutique hotel and authentic safari camps

At a glance itinerary

Days 1-2	Fly to Johannesburg. Arrive Johannesburg or Tambo airport. Transfer to the Kingdom of Eswatini (formerly Swaziland).
Day 3	Walk to Mlilwane Wildlife Sanctuary in the Ezulwini Valley (the Valley of Heaven). Optional afternoon walk to historic Execution Rock along the Machobane Trail.
Day 4	Transfer to north-western Eswatini. Guided day walk in the Malolotja Mountain Reserve. Optional canopy tour.
Day 5	Day at leisure at Phophonyane Eco Lodge with option of a short walk.
Day 6	Road transfer to Mantobeni Safari Lodge. Late afternoon walking safari.
Day 7	Morning and evening jeep safaris and a guided bush walk.
Day 8	Road transfer to Pafuri entering Kruger National Park at Punda Maria Gate. Afternoon walk.
Days 9-11	Guided walking safari through wild areas of Pafuri, the Luvuvhu River and Lanner Gorge.
Day 12	Morning walking safari. Road transfer to Louis Trichardt.
Days 13-14	Return to Johannesburg. Fly UK.

Trip summary

On this unique new walking safari, you will discover the colourful culture and superb walking trails of the Kingdom of Eswatini (formerly Swaziland) combined with a wild and remote on foot exploration of South Africa's remarkable Kruger National Park.

Firstly, visiting beautiful mountainous landscapes and flatland scenery, you will experience the essence of Eswatini. For such a small country, Eswatini boasts exceptional walking opportunities and here you will walk around two distinctive natural environments - Mlilwane Wildlife Sanctuary in the Ezulwini Valley (the Valley of Heaven), Eswatini's innovative conservation area, and Malolotja Mountain Reserve, a hiker's paradise and home to pretty flora and a wonderful variety of wildlife. Your accommodation in Eswatini is a highlight and includes a boutique hotel, a historic hilltop lodge and an eco lodge within a beautiful, unspoilt landscape.

Travelling north, your adventure continues in the wilds of South Africa as you arrive at the legendary Kruger National Park, home to the Big Five - lion, leopard, rhinoceros, elephant, and buffalo, and supreme wildlife viewing. Taking jeep safaris and guided bush walks you first explore central Kruger and its impressive natural habitat, before heading to the remote north, to the Pafuri wilderness area.

Pafuri is situated in the Makuleke Concession in the northern section of Kruger National Park, and is now owned by the Makuleke community following an historic agreement between the local people and the South African Government. Closed to visitors not staying in one of the camps or lodges in the concession, the Pafuri wilderness area offers a truly remote and exclusive safari experience; far away from the crowds that can be found in the more commercial and accessible areas of the Kruger. Spanning almost 60,000 acres, the untouched and untamed Pafuri is a vast area of great biodiversity and is particularly famed for its fabulous birdlife. With over 350 species of birds to be found here it offers some of the best birdwatching in all of South Africa.

The walking trails of Pafuri were acclaimed as one of the best walking safari experiences in Africa in the prestigious 2018 Safari Awards, and our exclusive walking safari follows these paths across the varied landscapes of the area. The Luvuvhu River, Lanner Gorge, Limpopo River, fever tree forests and Pafuri pans all offer a rich diversity of habitat and give abundant opportunities for bird and wildlife sightings.

From the comfort of a seasonal bush camp near the banks of the Luvuvhu River, you will embark each day on a point to point walk, using an open safari vehicle for drop offs and pick ups, adding thrilling jeep safaris to your daily exploration. Led by knowledgeable field guides and accompanied by an armed guide, your walks on the trail allow you to focus on the fascinating detail of the bush but you will also experience the rush of adrenaline when you come close to incredible African wildlife.

Your final night in the Soutpansburg Mountains, located in the Limpopo province of South Africa, offers the perfect ending to this unmatched exploration of wild southern Africa.

Special notes

Respecting the wildlife

The safaris on this holiday will be undertaken in an unfenced national park where the animals are wild. Your safari camps are also unfenced and dangerous animals are often found in and around the camps. Attacks by wild animals are rare, however, there are no guarantees that such incidents will not occur. Camp staff will give safety briefings and are always on hand should you require assistance or are in any way concerned.

Please respect the wildlife, never try to touch a wild animal and keep noise to a minimum whilst on the vehicle or on foot during your safari. It is important that you listen carefully to instructions from the camp staff and guides, and especially at night, don't wander about after retiring to your tent after dinner.

Your trip itinerary

Day 1: Fly London to Johannesburg.

Depart London on your overnight flight to Johannesburg in South Africa.

Overnight: In flight

Day 2: Arrive Johannesburg OR Tambo airport. Group transfer to the Kingdom of Eswatini (formerly Swaziland) - 5 hours.

Arriving at Johannesburg OR Tambo airport you will be greeted by your local guide and transferred by road to your hotel in the beautiful Ezulwini Valley in Eswatini.

Overnight: Mandela's Guest House, Malkerns (Meals: D)

Day 3: Morning walk to Mlilwane Wildlife Sanctuary in the Ezulwini Valley and optional afternoon walk along the Machobane Trail - 6 hours.

After a delicious breakfast, your guide will drive you a short distance to the boundary of the famous Mlilwane Wildlife Sanctuary. Mlilwane is best known for being the birth place of nature conservation in Eswatini, however it is also renowned for its unique walking trails and beautiful setting in Eswatini's Ezulwini Valley - the Valley of Heaven. The sanctuary itself is quite small yet it is home to a wide variety of animals and birds. During your walk it is common to see animals such as impala, nyala, zebra, warthogs, blesbok, kudu and Roan antelope. The walking trails in Mlilwane are popular and the animals have become used to humans, meaning that you are able to get close to most of the wildlife. This makes for a unique, intimate and rewarding wildlife experience.



The morning trail starts out on the southern boundary of the park and works its way down into the shallow Mhlambanyatsi River Valley, across the river and up to a pool where you may see basking crocodiles. This is a great spot for finding wallowing hippos and basking crocodiles. The trail then leads to the sanctuary's main camp where you can stop for a rest and visit a mini museum which presents an interesting history of the formation of the sanctuary and key personalities and pioneers of conservation in Eswatini. From the camp the trail cuts across the plains and marshlands of the western sector of the sanctuary before following the beautiful Mhlambanyatsi River upstream towards the base of the Mlilwane Hill where a short climb leads through a shaded forest to the famous Reilly's Rock Hilltop Lodge. Here you will be reunited with your bags, shown to your cosy rooms and treated to lunch on the verandah.

After lunch you have two options. You can either relax at Reilly's Rock and enjoy the beautiful gardens filled with aloe plants and succulents that attract many different birds or, alternatively you can choose to join a lovely afternoon guided walk. An earlier group said that this walk was a real highlight of the trip. The route is called the Machobane Trail, a 5km circular route which takes you along the base of an impressive mountain peak, to the north of the lodge, called Execution Rock. The trail rises gently up the base of the peak and then follows a contour (an old aqueduct) along the base of the rocky peak. The trail itself is interesting with many bridges, ladders and platforms making it fun and interactive. There are amazing views across the Ezulwini Valley along the whole route but perhaps the highlight is the ancient cave that houses the faint remains of bushman paintings on its rock facades. This cave would have been a prime location for people living in this bountiful valley many thousands of years ago.

In the evening, dinner is served inside the Reilly's Rock dining room next to a roaring fire.

Overnight: Reilly's Rock Hilltop Lodge, Mlilwane (Meals: BLD)

Day 4: Transfer to north-western Eswatini - 1.5 hours. Guided day walk in the Malolotja Nature Reserve - 3 hours.

You'll wake up at Reilly's Rock and start the day with breakfast on the verandah with great views out over the eastern plains of Mlilwane onto the Royal Mdzimba Mountains, the sacred burial grounds of the Swazi Kings. While enjoying breakfast it's common for birds to be attracted to the nearby bird tables and often one can catch a glimpse of small, rare antelope such as Klipspringer that are also attracted by the bird's activities. Across the plains, it's not only wildlife that can be spotted, the Swazi Kings' traditional royal residence of Eludzidzini, in the old village of Lobamba, is also within view.



After breakfast you'll pack up and drive out of Mlilwane up the escarpment and northwards towards the beautiful Malolotja Nature Reserve in Eswatini's north western highlands. Malolotja provides protected wetland, woodland, highveld grassland and mistbelt forest habitats for a wide variety of plant and animal life. The reserve's hiking trails rank among Southern Africa's finest as they offer not only a sense of true wilderness with their magnificent rugged country, but also a fascinating variety of fauna and flora. Malolotja has also been recognised as one of southern Africa's important bird areas due to the significant number of threatened species recorded here. The reserve is particularly important for breeding groups of endangered species such as blue swallow, blue crane, bald ibis and Stanley's bustard. Mammals to look out for include eland, black wildebeest, blesbok, rhybok, rock hyrax, baboons and the rare and elusive aardwolf.

On arrival at Malolotja you will have the choice of two guided trails. Both trail options are scenic walks as opposed to walking wildlife safaris and the focus is on experiencing the breathtaking scenery of the reserve. One option is the Majolomba Trail, a 5km loop route starting from the Malolotja picnic site following the beautiful and gently sloping grasslands of the Majolomba Valley. This is a relatively easy trail which descends gently down the valley crossing the Majolomba stream six times as it weaves through beautiful grassland and vlei. At the trails midpoint some magnificent views of the majestic Malolotja Valley open up to the north and there is ample opportunity for some classic scenic photography. The second half of the trail climbs back up the opposite side of the Majolomba Valley and is relatively steep in places before it joins the road head which leads back to the picnic site.

The second option has the Malolotja Waterfalls as its focus and is a short 3 km out-and-back trail which begins from the Logwadja start point and descends steeply into the main Malolotja River Valley. The trail is short but strenuous as it is relatively steep on the way in and out. The effort is worth it however, as the views across the entire Malolotja Valley and beyond are very impressive and rewarding. The Malolotja Falls themselves are the highest waterfalls in Eswatini (90m) and although it is only a small river the setting for the falls is quite spectacular.

After the trail you will leave Malolotja and drive for just 45 minutes to the secluded Phophonyane Eco Lodge where you will settle into your rooms and prepare for dinner in the spacious dinner area. While at the lodge there will also be the opportunity to take an optional canopy tour in the Sihlotswane Gorge which offers views of towering cliff faces and the tree-tops across the forest. (payable locally).

Overnight: Phophonyane Falls Eco Lodge (Meals: B D)

Day 5: Day at leisure at Phophonyane Eco Lodge with optional guided day walk.

Today is one of relaxation at Phophonyane Eco Lodge with an optional guided day walk in the mountains of Phophonyane Nature Reserve. The reserve protects the immense biodiversity of the increasingly threatened habitat and is rich in botanical diversity. It is home to a remarkable 240 species of birds and some of the world's most interesting geological features. You walk along magical forested trails and may hear the mysterious hoot of the scarlet and emerald feathered narina trogon, the curious whistle of the red duiker, and bark of the elusive bushbuck. Phophonyane is a great place to relax, breathe the revitalizing air and enjoy spectacular views of the nearby Phophonyane waterfalls and cascades. These falls are 80 metres high and tumble over several kilometres of beautifully exposed ancient gneiss, formed over 3.6 billion years ago, and said to be the world's oldest rock. You may enjoy dinner in the lodge's comfortable dining room.

Overnight: Phophonyane Falls Eco Lodge (Meals: B D)

Day 6: Road transfer to a Mantobeni Safari Camp - 5½ hours. Late afternoon walking safari in the Big Five savannas of western Kruger.

After enjoying a lovely breakfast looking out on pretty views across the reserve, you will drive through the northern border of Eswatini into wild and wonderful South Africa. You'll almost immediately notice the contrasts between the tiny kingdom you're leaving behind and the more advanced infrastructure of South Africa. Today's drive reveals stunning landscapes as you drive alongside scenic mountain sights, numerous nature reserves and rich vibrant orange groves, before arriving at Mantobeni Safari Camp in time for lunch. You'll have time to relax and prepare for your first late afternoon walking safari in the Big Five savannas of western Kruger.

Mantobeni is situated on the pristine Manyeleti Game Reserve which borders Kruger National Park, Timbavati and Sabi Sands Reserve. Game viewing here is outstanding and you can expect to see a wealth of sightings, including elephant, buffalo, kudu, zebra, wildebeest, giraffe, impala, waterbuck and warthog, together with their predators - lion, leopard, cheetah and hyena. African wild dog, which is a critically endangered species, is also resident here.

In the afternoon, accompanied by an experienced armed ranger, you set off on your first walking safari through the deep bush. Your ranger and guide will talk knowledgeably about this magnificent reserve, the landscapes you explore and the wild encounters you experience.

Dinner is plentiful and excellent - the food here is definitely a highlight. Meals are a communal activity, usually served at a long table with log fires and torches to create a really authentic feel. Simple homemade dishes, using predominantly local produce, are exquisitely presented.

Overnight: Mantobeni Safari Camp (Meals: BLD)

Day 7: Mantobeni Safari Camp - morning and evening jeep safaris and guided bush walk.

Today brings the full safari package and more with exciting game drives in open game viewing vehicles, in the early morning and late afternoon/evening, as well as one adrenaline fuelled bush walk.

Mantobeni walking trails can be hot work, but it's very exciting - seeing the animals from a vehicle just doesn't seem to compare. With a varying landscape and mixed vegetation Mantobeni is a natural extension of the bush and an impressive expanse of pristine wilderness just waiting to be discovered.

Your late afternoon and evening drives include sundowner drinks, views over the Mohwareng Hills, and glimpses of impressive nocturnal creatures as they hunt and graze. Bigger game that are regularly sighted in the reserve include elephant, rhino, lion, leopard and hippo, and in between meals and drives, you can watch the game and birdlife pass by while relaxing by the pool deck or in your comfortable tented safari accommodation.



Overnight: Mantobeni Safari Camp (Meals: BLD)

Day 8: Transfer to Pafuri entering Kruger National Park at Punda Maria Gate - 7 hours. Late afternoon walking safari - 1-3 hours.

This morning you will set off on an early morning road transfer to northern Kruger, entering the Park at Punda Maria Gate and travelling through the park to Pafuri. As you drive through keep your eyes peeled for elephant, zebra, wild dogs and kudu and notice how the population of birdlife becomes increasingly abundant; Arnot's Chat, eastern nicator, yellow-billed oxpecker and grey-headed parrot are common to this area.

The Pafuri region is a unique natural environment with a huge diversity of animal, plant life and natural habitats. It is steeped in history and dotted with ancient archaeological sites from early Africa civilisations which add to the character of this mystical corner of old Africa. You'll notice how the landscape changes from woodland to riverine forests, mountains, floodplains and pans where animals roam freely. It is here that you will find forests of fever trees, groves of baobabs and vast herds of wildlife. Highlights of your five day experience include visits to Crook's Corner, where the Luvuvhu and Limpopo Rivers meet, Lanner Gorge and the Luvuvhu fever tree forest.

Arriving at Pafuri Wilderness Trails Camp for lunch you will settle in and acclimatise to your wilderness surroundings, meet your highly knowledgeable and experienced trail guides and take part in a briefing and introduction to the area before departing on a late afternoon short introductory walk that will give you a taste of what's to come over the next few days.

Returning to camp you'll enjoy dinner and a roaring campfire under the impressive African night sky.

Overnight: Pafuri Camp (Meals: BLD)

Day 9: Guided walking safari through wild areas of Pafuri - 6 hours walking.

Each day, during your guided bush safari, you will wake early to enjoy stunning sunrises and the unique feeling that comes with a new day in a truly wild environment. You'll also maximise your wildlife spotting opportunities by being out in the bush before the heat of the day takes effect.

Today, after a light breakfast, you will head to Mangala in Luvuvhu west. Your camp crew will pack snacks for you to carry in your backpacks, alongside your 1-2 litres of water recommended for your walk. A fabulous walking experience awaits and you will be guided from the bottom to the top of the incredible Lanner Gorge. If the river levels are low enough you can walk barefoot through this perennial river. If the water levels are higher, you will keep to the riverbank, sometimes having to walk through thicker bush and on slightly tougher terrain to keep clear of the crocodiles. Lanner Gorge was named after the Lanner Falcon that nest high in the cliffs. The walk is long but rewarding, especially when you get to the top of the gorge and look down onto the beautiful Baobab forest and glimpse Mozambique and Zimbabwe in the distance.

Lunch is served at the top of Lanner Gorge where spectacular views spread across the horizon giving you a true sense of the wilderness that is Pafuri.

You'll return by vehicle to camp for a welcome bush shower and time to relax and enjoy dinner under the stars.

Overnight: Pafuri Camp (Meals: BLD)

Day 10: Guided walking safari through wild areas of Pafuri - 6 hours walking.

Departing early you head out in a safari vehicle for another exciting day in Pafuri. Heading to Banyini pan, you will walk for 3-4 hours to Mabyeni. Makuleke is considered a Ramsar wetland of global importance and Banyini Pan is a true birders' paradise. The pan, sometimes overflowing with water after heavy rain, attracts all types of wildlife. Here you will be able to see many water birds and aquatic life, grazing buffalo, roaming elephant bulls among clusters of marula trees and impala springing elegantly across the grassland. Discovering these mystical settings on foot is very exciting and, to a degree, a beautiful and peaceful experience.



You return to camp for brunch before an afternoon walk in the fever tree forest - a really magical experience. These magnificent trees only germinate after floods or after exceptionally heavy rains and some of the guides will tell you that the forest has its very own mood. If you're lucky enough you may come across a herd of graceful eland or a lone bull elephant walking through this special place.

Before dinner, you'll enjoy sundowners and snacks at Crooks Corner in the dry Limpopo riverbed, ending a perfect walking day.

Overnight: Pafuri Camp (Meals: BLD)

Day 11: Guided walking safari through wild areas of Pafuri - 6 hours walking.

Your final full day in Pafuri takes you on a trail to Hutwini Gorge, along Hutwini Mountain and on to Mashisiti.

At the base of Hutwini mountains you will find some ancient ruins called the Hutwini ruins. These are smaller than, but similar to, those of Thulamela (ruins of a kingdom that existed between 1240 AD and 1700 AD in north-eastern South Africa). This gorge does not have any water flowing through it but is frequented by animals walking towards the river to drink. Mashisiti is a popular spring that has water all year round.

Surrounded by stunning views, you conclude your morning walk with lunch at the top of Mashisiti before returning to camp to relax before you prepare for a short afternoon walk.

Dinner is served as you spend our final night under Pafuri's unforgettable night sky.

Overnight: Pafuri Camp (Meals: BLD)

Day 12: Morning walk/safari in Pafuri - 1-3 hours. Road transfer to Louis Trichardt - 4 hours.

There are no excuses for sleeping in this morning as sunrise brings the most wonderful shades of light, energising waking sounds and an exhilarating air, and you will not want to miss your final opportunity to experience wild Pafuri. Taking a short morning jeep safari and guided walk you conclude your wilderness safari in this unforgettable region. Saying goodbye to your extraordinary trail guides and comfortable wilderness camp, you hit the road and travel south leaving behind the wilds of Kruger National Park.

Your final afternoon and evening will be spent at either the Madi a Thavha Lodge or the Mahovhela Bush Lodge situated in the scenic Soutpansberg Mountains.

Overnight: Madi A Thavha Mountain Lodge or Mashovhela Bush Lodge (Meals: B D)

Day 13: Group transfer to Johannesburg airport. Depart South Africa.

After a lazy breakfast and the option of a short walk, you will transfer from the Soutpansburg Mountains to Johannesburg OR Tambo International Airport for your overnight flight home.

Overnight: In flight (Meals: B)

Day 14: Arrive London.

Arrive London.

Our grading system

Eswatini, Kruger & Wild Pafuri Walking Safari is graded as a Gentle walking holiday, as described below.

Gentle

Trips within this grade typically mix sightseeing with easy-paced half and/or full day walks. On these trips, walks will be on relatively low altitude trails, for a duration of around 4-6 hours. On all of our Gentle graded trips, some ascent and descent should be anticipated, and there may occasionally be a longer walking day. Holidays within this grade generally use hotels and comfortable lodges although a few do have some nights camping.

These holidays are suitable for people who enjoy easy-paced walks in the British countryside or exploring on foot rather than in a vehicle.

What the price includes

Mountain Kingdoms aims to offer the best value for money. We do not charge extra for meal packages or apply local charges and try to ensure that all the key elements of your holiday are included.

What's included:

- ✓ Expert local leaders throughout
- ✓ Experienced and highly knowledgeable trail guides
- ✓ All road transport by private vehicles
- ✓ Good standard of accommodation in hotels, lodges, fixed tented camps and seasonal, full-service bush camps
- ✓ 11 breakfasts, 7 lunches, 11 dinners
- ✓ Sightseeing and activities as specified
- ✓ Entry fees to national parks
- ✓ Economy class return air fares from the UK & UK Departure Tax (Flight Inclusive option)
- ✓ Single, timed, group airport transfers for international flights on arrival and departure
- ✓ Carbon offsetting with the Ecoan Tree Planting Project (for clients taking our flight inclusive option)

Airport transfers

The cost of a transfer to/from the airport is included in the price of your holiday. This is a single group transfer which is arranged to coincide with the timings of the group flights. If you book your own flights which arrive/depart at different times to this, or we book flights at your request that have different timings, we will be happy to provide a quote for a separate transfer. Please contact us should you require any further information.

What's not included:

- × Travel insurance (guidance will be given in your dossier)
- × Visa fees
- × Immunisations
- × Lunches on days: 2, 4, 5, 12 & 13)
- × Tips to camp staff, safari guides and scouts

Water-to-Go Reusable Bottle Campaign

We have joined the campaign to help cut down on the use of plastics and, in particular, single-use water bottles. To do this we have teamed up with the revolutionary company, Water-to-Go who have developed a multi-use drinking bottle with a reusable filter that eliminates over 99.9% of all microbiological contaminants. This makes water from virtually any source safe to drink and significantly reduces the need for travellers to buy bottles of water wherever they are in the world.

Our clients who are not given a free Mountain Kingdoms kit bag for their holiday (these are required for certain treks), will instead receive a free Mountain Kingdoms Water-to-Go bottle. These unique Water-to-Go bottles can also be purchased from us at a discounted rate.

For further information about our campaign visit <https://www.mountainkingdoms.com/water-to-go-reusable-bottle-campaign>.

Your accommodation

We will endeavour to secure the lodges named in the itinerary but if our first choice of hotel is not available we will book a suitable alternative of a similar standard.



Malandela's Guest House, Malkerns

Malandela's Guest House is situated in the Malkerns Valley, next to Mantega and Milwane wildlife parks. Malandela's is a converted farmhouse with just eight individually styled rooms that offer good amenities and homely touches. Outside there is a pool, terrace and attractive gardens. The hotel has its own bar and country restaurant with views over the Swazi Mountains.



Reilly's Rock Hilltop Lodge, Mlilwane

As the name suggests, Reilly's Hilltop Lodge is situated on top of Mlilwane Hill in a protected reserve for endangered flora and fauna. From the lodge there are commanding views of Mlilwane Wildlife Sanctuary and there is plenty of opportunity to view birds and antelope in the lodge's grounds. The historic, colonial-style lodge has 6 generous rooms, each individually styled with its own charming character. The lodge has a dining room although meals are normally taken al fresco on the verandah or round the campfire.



Phophonyane Falls Eco Lodge

Surrounded by forests, falls and mountains and set within extensive gardens the Phophonyane Eco Lodge offers wonderfully relaxing and scenic accommodation in north-western Eswatini. Room styles vary from traditional Swazi 'beehives' to authentic safari tents and the lodge facilities include a pool, bar, restaurant and verandah - ideal for enjoying a sundowner and watching for wildlife.



Mantobeni Safari Camp

Overlooking a dry river-bed and shaded by a grove of Tamboti trees, Mantobeni offers a stylish bush camp experience. The camp has a splash pool, seating area, bar and extensive wine cellar. The tents have raised verandas and are furnished with extra-length beds, comfy seating, mosquito nets and open-air, en suite bathrooms.



Pafuri Camp

Pafuri Camp is a stylish tented safari camp located near the banks of the Luvuvhu River in the remotest part of the Kruger National Park. Great facilities include a bush bar, swimming pool, outdoor dining, boma, firepit and Wi-Fi in the main area. Stylish fixed tents have a private deck with views over the Luvuvhu River, mosquito nets and fans, comfortable extra-length beds and en suite bathroom with indoor and outdoor showers.



Madi A Thavha Mountain Lodge or Mashovhela Bush Lodge

Located in the Limpopo province of South Africa, Madi a Thavha Lodge is a colourful reflection of the local rural heritage and culture. Rooms are decorated with brightly coloured furniture and textiles and the lodge has a Cultural Heritage centre, Art Gallery and Textile & Design studio which you are welcome to visit. The lodge reception is in a converted farm house along with the dining room where delicious 'fusion food' is served. Outside is a pool and lapa (similar to a gazebo). The lodge is surrounded by mountains and valleys which are home to an abundance of wildlife.

We may also use the Mashovhela Bush Lodge which is located in the heart of the Soutpansberg Mountain area of northern Limpopo. It offers 3 star eco-accommodation in ethnically decorated chalets which are arranged to evoke the atmosphere of a Venda village. The lodge has a swimming pool and free Wi-Fi.

Meal arrangements

11 breakfasts, 7 lunches, 11 dinners. Where lunches are not included the guide will stop at cafes/markets/restaurants and guests can order snacks/meals and try some local cuisine.

Flight arrangements

Flight inclusive from price

Our 'Flight inclusive from' price is based on the best fare available at the time of printing. As airfares change on a constant basis, this should be used only as a guide price. Rest assured that, at the time of booking, we will endeavour to get the best possible price for the flights you need. Remember, the earlier you book the greater your chances of securing the best fare.

Flight inclusive packages booked through Mountain Kingdoms are protected through our ATOL bonding scheme.

Flight upgrades and regional Airports

Please call us on +44 (0)1453 844400 for flight options from regional UK airports, Business Class upgrades, alternative airlines and stopovers. Please also check our website for the most up to date flight inclusive 'from' prices.

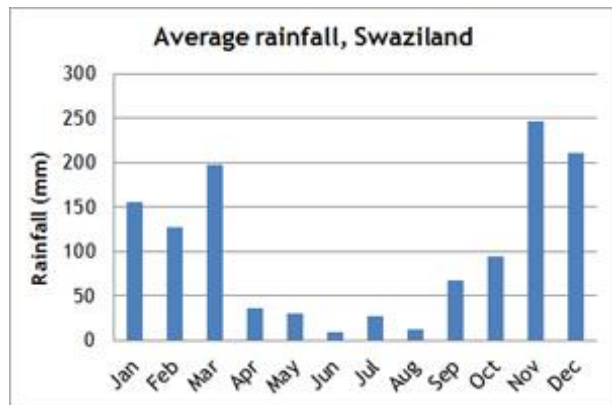
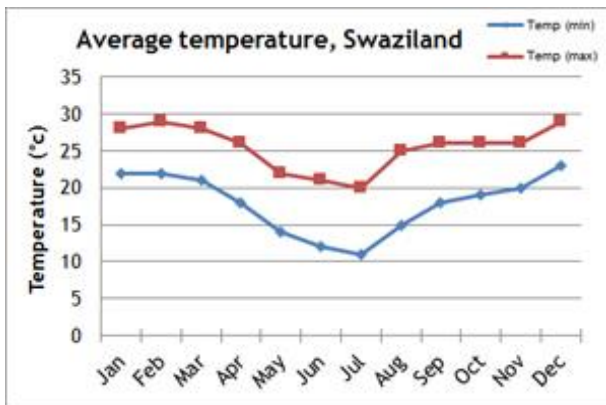
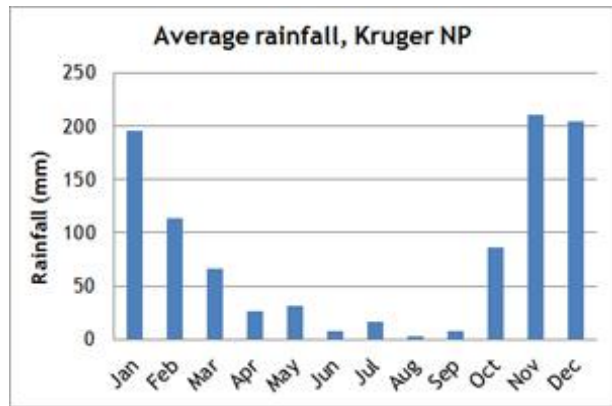
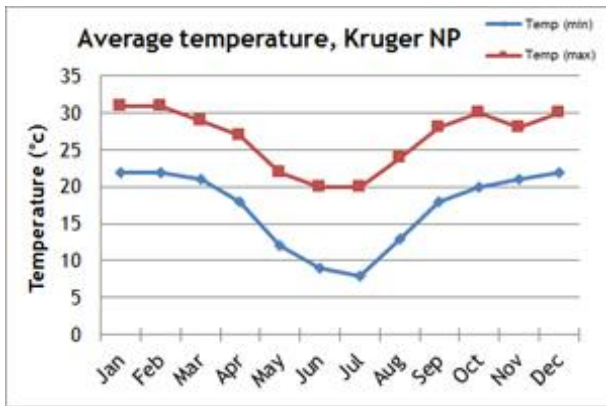
Further information

When we receive your booking, we send you a full Trip Dossier which contains details of any visas and vaccinations required, a suggested gear and clothing list and lots of useful information. If you do have queries at this initial stage do call us on 01453 844400 and we will be pleased to offer advice.

The nature of adventure travel

Every effort will be made to keep to this itinerary but we cannot guarantee that things may not change, either before you travel or while you are away. By its very nature, adventure travel involves an element of the unexpected, particularly in more remote areas. A variety of factors such as adverse weather conditions, changes to local schedules and difficulties with transportation can all contribute to the need to make changes to the itinerary, often at the very last minute. Our Operations Manager and your Trip Leader will make every effort to maintain the integrity of the original itinerary and minimise the impact of any changes, but an easy-going and flexible nature is a real asset! Please note that all timings and distances given are approximate.

Climate information



Extensions

Extending your holiday

If you would like additional inspiration on how or where to extend your holiday please call us on 01453 844400. Alternatively, you can download a range of extension information sheets on our website, at www.mountainkingdoms.com.



There are many ways you can extend your holiday with Mountain Kingdoms: you could book extra nights at a hotel at the start or end of your trip, take a personal sightseeing tour or enjoy some other exciting activity. In fact whatever's available, we can help make it happen. We're happy to suggest ideas, provide quotes and make all the arrangements. We can also assist with flight and hotel upgrades.

Why book this holiday with Mountain Kingdoms?

- Our walking safari in Pafuri has been designed exclusively for Mountain Kingdoms and uses the award winning Pafuri Walking Trails.
- We have selected authentic safari camps in remote locations that actively specialise in exploring the bush on foot.
- We have hand-picked a range of characterful and stylish accommodation including scenic lodges, a boutique hotel and authentic Pafuri and Mantobeni safari camps.
- On game drives we use open-sided vehicles ensuring great views for all.
- Walking safaris and jeep safaris are led by highly knowledgeable, experienced field guides.
- Small numbers, minimum impact and a true wilderness experience makes this a very special holiday - therefore we have a maximum group size of 8 clients.
- As part of our commitment to 'Tourism Declares a Climate Emergency', we will be carbon-offsetting all international flights booked through us by donating funds to the Ecoan Tree Planting Project in Peru.
- If you wish to fly with a specific airline, from a regional UK airport or on alternative dates to the main group we would be happy to arrange this for you. Please contact our Flights Manager, April, for flight options, quotes and further information.

If we've tempted you to take your next holiday with us, we advise you to check availability and you can do this via our website: www.mountainkingdoms.com or by calling the team on +44 (0)1453 844400. Bookings can be made online, by phone or by completing a booking form and returning it to us. We can also provisionally hold places if you need time to consider your options.

What our clients say



A great holiday for spotting wildlife both animals and birds. The regions visited allowed the contrast between green mountainous areas, scrubland and the bush. All the guides very knowledgeable about the wildlife and South Africa in general. The two weeks just flew by a really enjoyable experience.

-Tim, Northants



Two distinctly different countries offering a wild and varied combination of picturesque landscapes and unforgettable wildlife encounters. Swazi culture, stunning day walks, adrenaline fuelled night drives, classic Kruger and remote northern Kruger - what a wonderful adventure!

-K Robins, Wilts

Mountain Kingdoms - distinctly different

Truly independent

In an age where many so-called 'independent' travel companies have in fact been bought out by multi-national giants, we remain fiercely independent with all the benefits this offers our clients.

Value for money prices with an emphasis on quality

We are not in the business of cutting our itineraries and services to the bone to offer eye-catching cheap prices. We use some of the best airlines, and typically 3 or 4 star hotels in cities. We include the majority of meals and private transport for road travel. We use excellent equipment and appoint well-trained staff and leaders. Last year, over 98% of our clients rated their Mountain Kingdoms holiday as 'excellent' or 'good'. We are members of AITO and bound by their quality charter.

Complete financial security

You can book with us confident that your holiday has full financial protection. Flight inclusive holidays are financially protected by the Civil Aviation Authority under ATOL licence number 2973 and 'Land Only' holidays are covered by a bond secured with ABTOT.

No Surcharge Guarantee

Your peace of mind is important to us so we have a No Surcharge Guarantee on all Land Only and Flight Inclusive bookings. This means that there will be no change to the price of your holiday once we have confirmed your booking, regardless of fluctuations in exchange rates or fuel prices.

Award winning Responsible Tourism

We feel strongly that all our holidays should benefit local communities, protect the environment and respect local traditions, religion and heritage. You can read more about the charities we support and our Responsible Tourism commitments and initiatives on the following page or at www.mountainkingdoms.com.

Genuine small group travel

Almost all of our holidays have a maximum group size of just 12, plus leader. This provides more contact with your leader, readier access to off-the-beaten-path areas, greater interaction with local communities and a reduced environmental impact.

Loyalty Discount

If you have previously travelled with us we recognise your loyalty with a discount on future trips.

Booking your holiday - it couldn't be easier

Once you've chosen your Mountain Kingdoms holiday you can book online, call the office or complete and post a booking form which can be found in our brochure or downloaded from our website. If you would like to hold a place on one of our trips, whilst you make up your mind, please give us a call to make a provisional booking. This is a no-obligation, no-cost booking and we will hold your place until space comes under pressure or we need your decision.

Comprehensive information

When we receive your booking we send you a full trip dossier which contains details of visas and vaccinations required, a suggested gear and clothing list and lots of useful information. In fact, everything you need to know to give you peace of mind and allow you to prepare for your trip of a lifetime.



RESPONSIBLE TOURISM STATEMENT CLIMATE EMERGENCY PLAN



For over 33 years, Mountain Kingdoms has been offering people the chance to visit amazing places on this extraordinary planet. We now offer trips to all corners of the world, but we are conscious that inevitably our holidays have a detrimental impact on the world around us, and we want to do all we can to reduce our carbon emissions. We are a signatory to Tourism Declares a Climate Emergency, along with a growing number of like-minded, reputable tour operators. For more information, please visit www.tourismdeclares.com

From 2020 onwards, we will be focusing on how we can reduce the carbon emissions that our holidays produce, and how to counterbalance this carbon by supporting carbon offset measures. Here are some of our current and future plans to minimise the impact of our business as a whole:

Carbon Offsetting

Already doing:

- ✓ We have been offsetting carbon since 2007, but will be increasing our donations to the [Ecoan tree planting project](#) in Peru this year. This is with a trusted partner where the funds go directly to a project where the community plants trees on its own land.

Will do:

- ✓ We are working on making our carbon offsetting more accurate and targeted.
- ✓ In future, we will add to that a further estimate for carbon produced by hotels, local road travel, trains and internal flights to arrive at a carbon offset sum for each trip we operate.
- ✓ Carbon offsetting will be included in our holiday prices. For our Flight Inclusive holidays it will include the international flight and any emissions produced by inland travel and accommodation. Our Land Only prices will include the cost of offsetting emissions caused by inland travel and accommodation.

Reducing Carbon Emissions

Already doing:

- ✓ We already offer the majority of our customers a free filtered water bottle which means they can instantly cut down on their single-use plastic consumption. This will be an ongoing project.
- ✓ We already predominantly use locally owned hotels, but will continue to ensure that, where possible, we use these rather than multinational chains.
- ✓ We have joined the Tourism Declares a Climate Emergency initiative to stand alongside like-minded travel companies, to work together to initiate best practices to make tourism as sustainable as possible.

Will do:

- ✓ We will re-evaluate our flights to make sure we are using the most fuel efficient airlines with the youngest fleets and, where possible, direct flights for each trip.
- ✓ We will stop offering unnecessary optional flights – for example our Everest sightseeing trip.
- ✓ We will eliminate unnecessary staff flights wherever possible.
- ✓ We will look at minimising internal flights.
- ✓ We will be asking all our worldwide agents and suppliers to look at their own carbon footprint and encourage them to reduce it.
- ✓ We will promote our more low impact trips to give customers an informed choice.

As part of our wider commitment to Responsible Tourism, we will continue to support a number of charities with whom we have had a long standing relationship over many years. These include: Shiva Charity in Nepal (Ginette Harrison School), Simien Mountains Mobile Medical Service and Porter Welfare, as well as setting aside a sum for emergency disaster relief should the need arise.

