

Gentle Walking Bhutan with Punakha Tsechu

The best of Bhutan - gentle walks, cultural highlights, comfortable accommodation and a festival visit.



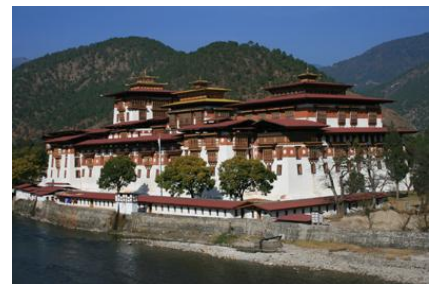
Group departures

See overleaf for departure dates

Holiday overview

Style	Walking
Accommodation	Hotels
Grade	Gentle
Duration	15 days from London to London
Trekking / Walking days	Walks on: 8 days
Min/Max group size	4 / 12. Guaranteed to run for 4
Trip Leader	Local Leader Bhutan
Land only	Joining in Kathmandu, Nepal
Max altitude	Cheli La Pass, 3,990m/13,090ft, Days 10 & 11

Private Departures & Tailor Made itineraries available



tel: +44 (0)1453 844400 info@mountainkingdoms.com www.mountainkingdoms.com

Mountain Kingdoms Ltd, 20 Long Street, Wotton-under-Edge, Gloucestershire GL12 7BT UK
Managing Director: Steven Berry. Registered in England No. 2118433. VAT No. 496 6511 08

Group Departure Dates and Prices

Group departures

2027 Dates:

Sun 14 Feb - Sun 28 Feb	With Punakha Tsechu
Sun 07 Mar - Tue 23 Mar	With Paro Tsechu
Thu 07 Oct- Fri 22 Oct	With Thimphu Tsechu
Thu 04 Nov - Thu 18 Nov	With Black-necked Crane Festival
Mon 06 Dec - Wed 22 Dec	With Nalakhar Tsechu

This is the detailed itinerary for our February 2027 departure only. Detailed itineraries for all other departures can be downloaded from our website or requested from the Mountain Kingdoms office.

Group prices

Visit the holiday page of our website for up-to-date land only and flight inclusive prices for all group departure dates <https://www.mountainkingdoms.com/holiday/gentle-walking-bhutan>.

Single supplement options can also be found here.

Will the trip run?

This trip is guaranteed to run for 4 people and for a maximum of 12. In the rare event that we cancel a holiday, we will refund you in full and give you at least 6 weeks warning. Many trips do fill up quickly - we advise you to book early if you want to secure a place(s) on the dates of your choice.

No Surcharge Guarantee

The flight inclusive or land only price will be confirmed to you at the time you make your booking. There will be no surcharges after your booking has been confirmed.

Insurance

We offer a travel insurance scheme - please contact us for details.

Private Departures

We can also offer this trip as a private holiday. A Private Departure follows exactly the same itinerary as the group departure but at dates to suit you (subject to availability) - please contact us with your preferred dates.

Tailor Made service

We pride ourselves on the level of quality and choice we provide for our clients who want a fully tailor made holiday. One of our well-travelled experts will be able to advise on the accommodation best suited to your needs, the sights you should visit (and those to avoid!) and the best walks and activities matched to your ability. In short, we will work together with you to create your perfect holiday. If you would like to explore the idea of a Tailor Made holiday with Mountain Kingdoms then please call us on +44 (0)1453 844400 or see the Tailor Made pages of our website for further inspiration.

Your guide



You will have an English-speaking Bhutanese guide to lead your trip. Mountain Kingdoms have been working with the same partner in Bhutan since 1986 and their guides are some of the best in the Kingdom. They speak good English, as this is taught in all Bhutanese schools, and are fully qualified guides. The Tourism Authority of Bhutan insists that a Bhutanese trek or tour leader must pass his/her guiding exams in Thimphu before accompanying groups of foreign visitors.

Your trip highlights

- Stay in first-rate accommodation in Bhutan using comfortable hotels and lodges
- Relax at Dwarika's hotel in Kathmandu - a unique heritage property
- Explore the cultural highlights of Bhutan including iconic Taktsang Temple
- Enjoy an excellent and varied programme of gentle walks
- Join the festivities at the Punakha Tsechu

At a glance itinerary

Days 1-2	Fly to Kathmandu. At leisure in Kathmandu.
Days 3-4	Fly to Bhutan and drive to Thimphu. Sightseeing and walk to Wangditse Monastery.
Day 5	Drive to Punakha. Attend the Punakha Tsechu.
Day 6	Visit Chimi Lhakhang and walk in the Punakha Valley. Visit the dzong and drive to Gangtey.
Day 7	Walk in the Gangtey Valley. Drive to Trongsa.
Days 8-9	Ridge walk from Tharpaling. Drive to Jakar. Explore the Bumthang valley with valley walks. Visit Jakar Dzong.
Days 10-11	Fly to Paro. Drive to Haa with Kila Nunnery visit and walks in the Haa Valley. Return to Paro.
Day 12	Full day in Paro Valley with walk to Taktsang Monastery and other sightseeing.
Days 13-15	Fly to Kathmandu. Time at leisure. Fly to London.

Trip summary

The tiny Kingdom of Bhutan in the eastern Himalaya, or the 'Thunder Dragon Kingdom', successfully remained isolated from the outside world for very many centuries. Only at the time of the 4th King's Coronation (1974) was the first trickle of foreigners allowed in. Prior to the building of the road from India to Thimphu even visiting Indian presidents took six days on horseback to visit the King. It still remains a secretive Kingdom and the present 5th King is keen to preserve its unique customs and traditions. Its history is a capsule of all that is mystical about the Himalaya; re-incarnate rulers, who used black magic to defeat Tibetan aggressors, lamas, saints, who foretold the future and who fought demons opposed to the spread of Buddhism, and civil wars between powerful district governors, or penlops, who laid plot and counter-plot in an endless cycle of strife and assassinations.

This holiday offers the perfect introduction to Bhutan, for those who like to explore on foot! We have designed the itinerary to give you a wide variety of experiences though it will be an adventure enjoyed in comparative comfort because every night is spent either in a hotel or comfortable lodge. Each walk has an interesting objective taking you to fascinating temples, hermit retreats, old palaces, ancient villages or simply into lovely scenery. This is a holiday that will be enjoyed to the full by those who enjoy weekend walks in the British countryside. As well as the main walk, on certain days a gentler or harder walk may also be possible. On certain days it is also possible to opt out of the walk, enabling you to relax in or around your hotel or lodge. There are also exciting road journeys following twisting mountain roads and crossing high passes in your comfortable mini-coach. By its nature this is an adventure with plenty of varied walking in a place that is only just emerging into the 21st Century.

This departure also visits the flamboyant Punakha Festival that takes place in the grounds of the majestic Punakha Dzong.

Special notes

Kathmandu - Paro flights

Please note that there is the small possibility that flight schedules between Kathmandu and Paro could change in the coming months. This may result in alterations to the itinerary and/or the dates of travel.

Paro-Jakar flights

The domestic flights to/from Paro/Jakar are weather dependent and there can be difficulties securing these flights, so you need to be prepared for the drive between these destinations if the flight does not operate. Our itineraries are planned to allow enough time for this road journey if flights are cancelled for any reason.

Your trip itinerary

Day 1: Depart London.

Depart London on your overnight flight to Kathmandu.

Overnight: In flight

Day 2: Arrive Kathmandu. Group transfer to hotel.

You will be met and transferred to the luxurious and stylish Dwarika's Hotel which is filled with Nepalese wooden carvings and statues and has a superb restaurant where you can eat in traditional style. It also has a cool, elegant courtyard and a swimming pool. After the long flight from London there's no better place to relax.

Overnight: Dwarika's Hotel, Kathmandu

Day 3: Fly to Paro. Drive to Thimphu. Visit the giant Buddha Statue.

After breakfast you will transfer to the airport for the short flight up to Bhutan. On a clear day the panoramic views of the Himalaya are sensational, including Everest and Kangchenjunga, but particularly exciting is the approach through the Bhutanese foothills and the landing, including a few steep turns to land at the tiny airstrip of Paro. Although you are at the mercy of the airline computer, if possible try to sit on the left hand side of the plane for the most spectacular views.



On arrival you will be met at the airport and then driven to Thimphu a journey of around 1½-2 hours. Thimphu has an attractive valley location and is relatively small for a capital city although it has grown greatly in recent years. One of the best ways to get an overview of Thimphu is to visit the large Buddha statue, perched high above the town. This will give you excellent views and is a good way to orientate yourself to Thimphu and its surrounds. Depending on the time available, you may do some further sightseeing this afternoon.

Overnight: Phuntso Pelri Hotel or Similar, Thimphu (Meals: BLD)

Day 4: Walk to Wangditse Monastery. Sightseeing in Thimphu.

This morning you will drive up to Sangaygang next to the Bhutan First Broadcasting Service tower, located in the North West of Thimphu. It is only about a mile drive up to the tower so if you feel like you would like to burn a bit more energy you can always walk up instead. From the tower you will have great views over Thimphu Dzong and the Thimphu valley as you start your walk contouring the beautiful hills to visit Wangditse Gumpa. This walk should take around 1.5 hours. You will have time to visit the gumpa before you walk down for another 30 minutes to reach Dechen Phodrang Monastery. This monastery houses around 450 student monks enrolled in a 8 year course. The monastery is also home to some fantastic UNESCO monitored 12th century paintings. You will then meet your vehicle and be driven back to Thimphu.

In the afternoon there will be time to enjoy some further sightseeing. There are many places of interest to visit in the town including the Tashishoddzong (the main government buildings), the Textile Museum, the Heritage Museum, the late King's Memorial Chorten, and the silversmiths and pottery workshops. If you are looking for souvenirs the Government Handicrafts Emporium is possibly the best place to find local handicrafts to take home. You could also visit the Post Office to buy some of Bhutan's very attractive stamps, they will even print a valid stamp with your face on it while you wait! They also have good t-shirts on sale.

Overnight: Phuntso Pelri Hotel or Similar, Thimphu (Meals: BLD)

Day 5: Drive across the Dochu La to Punakha. Attend the Punakha Tsechu.

Driving out of Thimphu you climb to cross the Dochu La Pass, 3,048m/10,000ft, a spot marked by 108 chortens. Here, weather permitting you may take in a magnificent mountain vista. On clear days there are fabulous views of the eastern Himalaya from here, but this is a beautiful spot even on misty days. You then drive down through varied forest into the lush Punakha Valley.

Once you arrive in Punakha you will head to the dzong to attend the Punakha Tsechu. This is an annual festival introduced by the Zhabdrung to commemorate Bhutanese victories over the Tibetans. During the festival there will be masked dances and other enactments recalling the days when, in the absence of an army, men from the eight Tshogchens, or great village blocks of Thimphu came forward and managed to expel the Tibetan forces out of the country, ushering in a new-found internal peace and stability. Such festivals are great fun for visitors and locals alike giving the chance to attain religious merit, celebrate together and socialise.

Overnight: Zhingkham Resort or Damchen Resort or Similar, Punakha (Meals: BLD)

Day 6: Visit Chimi Lakhang. Punakha Valley walk and visit to Punakha Dzong. Drive to Gangtey.

You begin the day with a visit to Chimi Lakhang - a temple built by Drukpa Kunley. Known as the 'The Divine Madman', Drukpa Kunley was a 15th Century Bhutanese Lama and is Bhutan's most popular Saint and one of the most important figures in Bhutanese folklore. Despite the apparent conservatism of the Bhutanese people, Drukpa Kunley with his unconventional views on sex is a great favourite throughout the country - the phallus symbols painted on the outside walls of many houses date back to his teachings. Chimi Lakhang is especially popular with women who come here to make offerings and to pray for children. This charming lakhang is reached by a short walk across the paddy fields and the short excursion takes about 45 minutes each way.

Leaving the temple you will next enjoy a delightful walk in the Punakha Valley. You drive further up the valley to start your walk at a pedestrian suspension bridge that crosses the Mo Chu River and follow up through paddy fields to the base of the hill where Khamsum Yuelley Namgyal chorten is sited. The climb to the top is then quite steep, but takes only 45 minutes or so. This chorten was consecrated in December 1999 and contains sacred relics donated from Punakha Dzong. Leaving the grounds of the chorten via a different gate you descend to join a contouring path which ultimately leads you to the small village of Yabesa and you then follow the Mo Chu downstream past Sonagasha, the King's Palace and on to Punakha Dzong.



Now that the festivities have finished, you should be able to see more of the dzong today. It is one of the most spectacular and important in the Kingdom, and is situated at the confluence of two rivers. In 1994 there was a major flood in the town which caused a lot of damage to the dzong, but it has now been beautifully renovated and is a real showcase for Bhutanese craftsmanship and painting. You are normally allowed into the dzong unless there are VIPs visiting.

From the dzong you will drive to Gangtey a journey of about 3-4 hours. From Punakha you drive down the valley to the town of Wangdiphodrang whose massive and important dzong unfortunately burnt down in 2012 and is now under reconstruction. You drive through the few houses which mark the former township of Wangdi and then drive up the beautiful wooded valley of the Dang Chu towards the Pele La Pass at 3,300m/10,825ft. Passing the turning to Gangtey you may drive up to the pass for the fine mountain views from there before returning to drive down in to Gangtey.

Gangtey, also known as Phobjikha, is a beautiful glacial valley, wide, wooded and unspoilt. It is particularly famous as a major wintering ground for Black-necked Cranes, which arrive here late October and stay until early spring before heading back to their breeding grounds in Siberia. These birds are particularly respected in local culture and feature in local tradition as 'heavenly birds'.

Overnight: Hotel Gakiling or Yo Lo Koe Lodge or Similar, Gangtey (Meals: BLD)

Day 7: Half day Gangtey Valley walk. Drive to Trongsa. Visit Ta Dzong Museum.

Today you may see the Black Necked Cranes, if they are still resident. It can be worthwhile arranging to go to see them before breakfast as they awake and before they fly off to their feeding grounds for the day. Speak to your guide about this.

This morning you will have the chance for a pleasant walk in the valley. In addition to glorious scenery the valley boasts some wonderful legends surrounding events and geography, including tales about two different types of Yeti, a large one and a small variety, and many other interesting legends. A number of different walks are possible here and your guide will suggest a suitable one. Firstly, it is a short 10-minute drive to reach the Black necked Crane Information Centre. The cranes are usually only resident here between October and mid-February. The centre has interesting displays on the ecology of the valley, a small library on Bhutanese wildlife and birds and some telescopes for observing birdlife. Driving on it is another 10-15 minutes to reach the small hilltop settlement of Gangtey and its impressive gumpa, built in the 17th Century. From the gumpa you can follow a network of foot trails and farm tracks down from the hill top and down the valley visiting various villages and points of interest.

After lunch, you drive out of the valley and over the Pele La to reach the town of Trongsa. You will see Trongsa's splendid dzong long before you reach it because the road takes you up a long side valley before eventually turning back to Trongsa town. Trongsa has an exceptionally dramatic dzong, the ancestral home of the royal family. Because of its important strategic location this was one of the most important dzongs in the country. Set above the dzong is the Ta Dzong, the watchtower, a lovely old building which has been beautifully renovated and houses an excellent museum with several floors of royal memorabilia and sacred artefacts. The views from the roof are worth the climb.

Overnight: Yangkhil Resort or Similar, Trongsa (Meals: BLD)

Day 8: Ridge walk from Tharpaling - 4 hours. Drive to Jakar, 2,580m/8,465ft.

From Trongsa you drive across the Yotong La and towards Bumthang. The Bumthang region encompasses four major valleys and Jakar town. You will stay in the main valley called Chokhor. The other valleys are the Ura Valley which is to the east, Tang Valley which is slightly more off-the-beaten-track and the Chumey Valley - your destination for today's walk.

You drive up to a cluster of temples at Tharpaling - a sacred spot and place of meditation, founded by Geluwa Lonchen Rabchampa (1308-1363) during his self-exile from Tibet for ten years. Several picturesque monasteries dot the hillside above the Chumey Valley with views over Domkhar (Chumey) and Domkhar Summer Palace. Here you begin your walk along an old trail heading in the direction of Chumey. The path starts out beneath craggy cliffs, from where it climbs fairly gently up to the ridge top and reaches the Shutre Sae Pass at 3,700m/12,139ft. Sited on the pass in a glass case is a statue of the founder of Tharpaling. From here the views are phenomenal - looking south you can see over the Chumey/Domkhar Valley with the Black Mountains in the distance. The other way you get fabulous and unexpected views over Jakar town with the airport runway and the dzong clearly seen far below. Beyond and further north, you can see towards the high mountains - perhaps even Mount Gangkar Punsum on a clear day. This may be a good place to stop and enjoy your picnic lunch.

You descend from the pass in beautiful forest, nearly all downhill. On the higher reaches, you pass through pine, fir and rhododendron forest. Eventually you reach the road again at a huge area of prayer flags where you will meet your transport and head to your hotel in Jakar.

Overnight: Ugyenling Hotel or Similar, Jakar (Meals: BLD)

Day 9: Bumthang Valley walk with temple visits - 2-3 hours. Visit Jakar Dzong.

Today you will be able to explore around Jakar town with a short, almost entirely level walk taking in some of the principle sights of the valley. From the hotel you can walk to Jambay Lakhang. This is one of the country's oldest temples, built in the mid-7th Century. One interesting feature to look for is the set of three steps in the main temple. The first step, now hidden below floor level, is said to represent the time of the past or 'historical' Buddha. The second, very well worn, step represents the present Buddha, whilst the third step above, is said to represent the age of the future Buddha. The point at which the second step is worn down to ground level is held to be the time when the world as we currently know it will end.



From Jambay you take a farm track along the valley floor and walk for 30 minutes to reach Kurjey Lakhang, a series of three large temples. The oldest of the temples here houses a rock indented with the body shape of Guru Rinpoche, whilst the most recent dates back just 25 years and was built by the Queen Mother - Ashi Kesang Wangchuck. Descending from the temples you cross a suspension bridge and walk downstream for 45 minutes to Tamshing Lakhang, the most important Nyingma gumpa in the Kingdom, established in 1501 by Pemalingpa. Inside you can see a suit of chain-mail armour, which Buddhists believe will bring good fortune if you wear it and then walk around the inner temple three times. Your transport will meet you outside the gumpa and return you to your hotel. On the way you visit Jakhar town-ship and later you may visit the picturesque Jakar Dzong, the 'Castle of the White Bird', so called because a white bird was supposed to have indicated the most auspicious place to build. Before returning to your hotel you will have some free time or time for more exploration or shopping.

Overnight: Ugyenling Hotel or Similar, Jakar (Meals: BLD)

Day 10: Fly to Paro. Drive to Haa across the Cheli La. Village walks.

Today you will transfer to the small domestic airport at Jakar for the short flight to Paro. Your transport will meet you on arrival at the airport and you will then make the drive of around 1½ hrs up to the Cheli La, a pass at 3,990m/13,090ft. Here, in clear weather, you will have wonderful views of the snow-capped mountains to the west which mark the border with Tibet.

After admiring the views, you drive down into the Haa Valley down many zig zags. As you approach you will notice three almost identical conical hills in a line on the other side of the valley. These are believed by the locals to be the physical manifestations of three very important Buddhist saints. The left one is Manjushri (the god who holds the flaming sword which cuts the knot of ignorance), the middle one is Chenrizig (the Buddha of compassion of which the Dalai Lama is the human incarnation) and the right hand hill is Chana Dorji (this being the protector god of Bhutan). Collectively they are known as Rigsum (three hills). As you descend further you look down on the square yellow roof of the main monastery/fortress, Namgay Dzong. Spread around the dzong are the buildings of the Indian Army dating from the visit of President Nehru - the Indian army has a presence in Bhutan ostensibly to protect the kingdom from possible invasion from China. Although part of the dzong is used by the Indian Army the central tower of the Dzong is still used by the local people. The old town itself is just to the north-west and is really quite attractive with traditional two storey shops and a post office. There is a large school in Haa.

It is worth driving up to the very top of the valley for an overview. This takes about 40 minutes (11kms) and is a very pretty drive. From here you will get really good views of Haa valley itself as well as over to the mountains in the west. Coming back down towards the town you take a spur road to Talung village which is 20 minutes on a rough road. This village is situated in a small side valley and it's a good idea to take the vehicles to the top of the village and then walk down through the houses for a look at a typical Haa village. You may well receive 'invites' into one or two of the farmhouses which would provide an interesting look at the way of life and standards of living of typical Bhutanese farmers.

You can re-join your vehicle at the bottom of the village and then drive the short distance to the bottom of a track for a nice walk up to Yongto Gumpa, an ascent of 100 metres which takes about 30 minutes. Yongto Gumpa is perched on a ridge overlooking the main valley and is one of the oldest monasteries in Haa, thought to have been built in the 15th century. From here you walk steeply down the hill, 30 minutes and 200m descent, through pine trees, to Yangtha village. This is a large village on the floor of the main valley.

In 2001 they suffered a huge fire which destroyed 12 houses. Amazingly, the fire left the temple of the village perfectly intact. After the fire the King visited the people of the village and paid for the reconstruction. The new houses are built in exactly the same traditional style and blend in remarkably well.

(Please note that if the flight to Paro is cancelled today then you will drive back to Paro over the next two days instead of visiting the Haa Valley)

Overnight: Lechuna Heritage Lodge or Similar, Haa (Meals: BLD)

Day 11: Walk to Kila Nunnery. Drive back to Paro.

After breakfast you drive back up to the Cheli La. You will then walk to the Kila Gompa nunnery. The gompa is located in a beautiful position surrounded by a lush forest dominated by tall firs and sparkling mountain streams tumble down slopes which are covered with a variety of wildflowers and plants. The gompa is a peaceful retreat for Buddhist nuns who dedicate their lives to spiritual fulfilment. About 30 nuns live here, ranging in age from about 20 to 80 years. The community is one of the oldest of seven nunneries in Bhutan, and was initially established in the early 9th century as a meditation site. The nuns live a life of contemplation and seclusion, with daily prayer and spiritual practice. The temple itself is surrounded by numerous meditation huts, and many hidden caves lie inside the rocky cliffs. After being destroyed by fire, the temple was rebuilt and officially established in 1986. Your vehicle will meet you for the drive back to Paro.

Overnight: Hotel Olathang or Similar, Paro (Meals: BLD)

Day 12: Walk to Taktsang, 3,110m/10,203ft - 4-5 hours. Further sightseeing in the Paro Valley.

Today you will walk up to the famous Tiger's Nest, Taktsang Monastery - a fitting climax to your trip. The monastery is perched some 600m/2,000ft up on a cliff overlooking the valley and was said to be where the legendary Indian saint, Guru Padma Sambhava, flew from Tibet on the back of a tiger to defeat five demons, who were opposing the spread of Buddhism in Bhutan. It's a steep uphill walk through woods, of about 1½-2hrs, to reach a tea house (an ascent of 340m/1,115ft). Apart from offering welcome refreshment this tea house is one of the principle viewpoints of the monastery, and those who prefer not to climb any further can relax here whilst others continue on. If there is a particular religious gathering or VIP visit in progress, you will not be able to enter the monastery but the further half an hour's ascent is well worth it in any case, as it brings you to another viewpoint directly across from the monastery. If you are able to make a visit, the final section of the walk takes you from here steeply down approximately 100m/330ft into the gorge that separates you from the monastery and then climbs back up again to reach the monastery gate. You descend back to the valley floor by your outward route back to where your vehicle will be waiting. The full walk to the monastery and back involves approximately 740m/2,428ft of ascent.



There will then be time for further sightseeing in the afternoon to places you have not already visited. You may visit the ancient temple of Kyichu Lakhang which was one of 108 temples built by Songtsen Gampo an important early Tibetan king, to pin down the Bon demon who was thought to hover over the whole of Tibet. You might also drive up the valley to the atmospheric ruins of Drugyel dzong, a fort which originally protected the Paro valley from invasion from Tibet.

You may also visit the fabulous Paro Dzong and the Paro Museum if you have not done so already.

Overnight: Hotel Olathang or Similar, Paro (Meals: BLD)

Day 13: Fly to Kathmandu.

Today you will say goodbye to your Bhutanese guide and driver and check in for your flight back to Kathmandu. After a sensational take-off and weather permitting you should have a scenic Himalayan flight past Chomolhari, Bhutan's second highest peak, Kangchenjunga and Everest to arrive back to Kathmandu, where you will be met and transferred to the Dwarika's Hotel.

The rest of the day will be free for some sightseeing and last minute shopping.

Overnight: Dwarika's Hotel, Kathmandu (Meals: B)

Day 14: At leisure in Kathmandu. Transfer to airport and depart for London.

You will have much of the day free in Kathmandu to do some sightseeing or shopping or simply relax by the pool at your hotel. Later there will be a group transfer to the airport for your overnight flight back to London.

Overnight: In flight (Meals: B)

Day 15: Arrive London.

Our grading system

Gentle Walking Bhutan is graded as a Gentle walking holiday, as described below.

Gentle

Trips within this grade typically mix sightseeing with easy-paced half and/or full day walks. On these trips, walks will be on relatively low altitude trails, for a duration of around 4-6 hours. On all of our Gentle graded trips, some ascent and descent should be anticipated, and there may occasionally be a longer walking day. Holidays within this grade generally use hotels and comfortable lodges although a few do have some nights camping.

These holidays are suitable for people who enjoy easy-paced walks in the British countryside or exploring on foot rather than in a vehicle.

Trip altitude

Important - please be aware that this trip involves travel at altitude. Whilst all our itineraries are carefully designed to optimise acclimatisation to high altitudes, participants on this trip are likely to experience some symptoms of being at altitude. The Dossier pack we provide when you book your holiday includes comprehensive advice on safe travel at altitude. If you require further information or advice on travel at altitude prior to booking please contact the office to speak to an experienced member of our team. Alternatively we recommend www.medex.org.uk as a good source of information.

What the price includes

Mountain Kingdoms aims to offer the best value for money. We do not charge extra for meal packages or apply local charges and try to ensure that all the key elements of your holiday are included.

What's included:

- ✓ 12 x breakfasts, 10 x lunches, 10 x dinners
- ✓ Dwarika's 5* hotel in Kathmandu, on a twin-share, bed & breakfast basis
- ✓ In Bhutan, good standard hotel accommodation in main towns and best available hotels in outlying towns, on full board, twin-share basis.
- ✓ An English speaking Bhutanese leader
- ✓ Bhutan Visa
- ✓ Bhutan Departure Tax
- ✓ Single, timed group airport transfers for international flights on arrival and departure
- ✓ All internal flights and hotel/airport transfers
- ✓ All road transport by private vehicles
- ✓ Sightseeing where specified
- ✓ Economy class return air fares from the UK & UK Departure Tax (flight inclusive only)
- ✓ Carbon offsetting with the Ecoan Tree Planting Project (for clients taking our flight inclusive option)
- ✓ A free Mountain Kingdoms Water-to-Go bottle

Airport transfers

The cost of a transfer to/from the airport is included in the price of your holiday. This is a single group transfer which is arranged to coincide with the timings of the group flights. If you book your own flights which arrive/depart at different times to this, or we book flights at your request that have different timings, we will be happy to provide a quote for a separate transfer. Please contact us should you require any further information.

What's not included:

- × Travel insurance
- × Visa fees for Nepal
- × Lunch and evening meals in Kathmandu
- × Optional trips
- × Tips

Water-to-Go Reusable Bottle Campaign

We have joined the campaign to help cut down on the use of plastics and, in particular, single-use water bottles. To do this we have teamed up with the revolutionary company, Water-to-Go who have developed a multi-use drinking bottle with a reusable filter that eliminates over 99.9% of all microbiological contaminants. This makes water from virtually any source safe to drink and significantly reduces the need for travellers to buy bottles of water wherever they are in the world.

Clients who are not given a free Mountain Kingdoms kit bag for their holiday (these are required for certain treks), will instead receive a free Mountain Kingdoms Water-to-Go bottle. These unique Water-to-Go bottles can also be purchased from us at a discounted rate.

For further information about our campaign visit <https://www.mountainkingdoms.com/water-to-go-reusable-bottle-campaign>.

Your accommodation

We will endeavour to secure the hotels named in this itinerary but if our first choice of hotel is unavailable we will book a suitable alternative of a similar standard.

Hotels in Bhutan

Please note that there is generally a shortage of hotel/lodge accommodation in Bhutan, especially outside Paro and Thimphu. Although we pre-book rooms as far in advance as possible, anything can happen and probably will, e.g. if the royal family suddenly has a visiting delegation, accommodation may be changed at short notice. Additionally, during peak seasons, it can sometimes be very difficult to secure not only the hotels/lodges we want, but also the single rooms we might need. In these circumstances singles may occasionally be asked to share but in such cases we refund any single room supplements that might apply. Given these conditions we will make every effort to secure any of the following hotels:



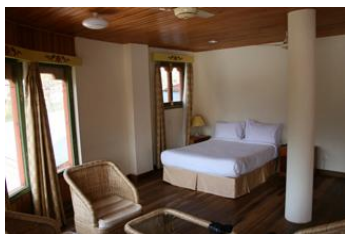
Dwarika's Hotel, Kathmandu

Dwarika's unique 5* hotel is built in Nepalese style and features many architectural relics rescued from palaces and temples in the valley as well as Nepalese furniture, carvings and statues. The building has a palace-like atmosphere and you really feel as if you are stepping back into Nepal's history. Rooms are large and stylish and its elegant restaurant is one of the places to eat in Kathmandu. It also has a pleasant courtyard garden with swimming pool.



Phuntso Pelri Hotel or Similar, Thimphu

Despite its somewhat dark entrance hall, this new hotel is very well appointed, with custom made Bhutanese wooden furniture and good sized rooms. During busy periods, especially during festivals, we may use the Jomolhari Hotel, the Kisa Hotel, Hotel Gakyil, Hotel Osel or the Amodhara Hotel. These are amongst the best tourist class hotels in Thimphu.



Zhingkhram Resort or Damchen Resort or Similar, Punakha

Overlooking Punakha Dzong, and only opened in 2016, the Zhingkhram Resort is one of the best hotels in Punakha. The well-proportioned, stylish rooms come complete with free Wi-Fi, minibars and coffee/tea making facilities as well as balconies giving picture-perfect views of the dzong and the surrounding hills and countryside. Alternatively, the Damchen Resort is a newly renovated hotel sitting on the banks of the Puna Chhu River in the Punakha Valley. Rooms are clean, cosy and bright with good amenities, wooden furniture and nice decorative touches. The hotel is a short, easy walk from the small town of Khuruthang which has a selection of shops and restaurants.



Hotel Gakiling or Yo Lo Koe Lodge or Similar, Gangtey

These two lodges in Gangtey and have been recently updated. They offer relatively simple but comfortable accommodation, and are built in local style with cosy rooms using a lot of wood panelling and with attached bathrooms. Food is plentiful and good.



Yangkhil Resort or Similar, Trongsa

Set within walking distance of Trongsa town, Yangkhil Resort is a small, relaxed establishment with gardens and great views of Trongsa Dzong and the surrounding countryside.



Ugyenling Hotel or Similar, Jakar

Nestled in a picturesque setting facing the Bumthang valley and river, the Ugyenling has well-appointed rooms with a seating area warmed by a bukhar (wood burning stove). Rooms also offer tea/coffee making facilities and Wi-Fi as well as a sit-out balcony with views of the surrounding mountains and valleys. Set in a walled compound, the hotel has its own international restaurant, large bar and a traditional hot stone bath.



Lechuna Heritage Lodge or Similar, Haa

This lovely heritage lodge located in the picturesque village of Lechu, not far from Haa Village, is a renovated farmhouse. It has been beautifully restored, skillfully blending modern comforts with traditional style. The lodge has a cosy bar, common room and garden courtyard, and although its seven lovely rooms share bathrooms, they have been individually designed and offer very comfortable accommodation.



Hotel Olathang or Similar, Paro

Originally built for the coronation of the Bhutan's 4th King in 1974, this attractive hotel stands on a hill overlooking Paro town. Rooms in the main building are set around a peaceful courtyard and there are also a number of cottages dotted around the spacious grounds. Decoration is typically Bhutanese with stripped wooden floors and colourfully painted walls. Rooms are well-equipped and the hotel has its own spa, international restaurant and bar.

Meal arrangements

12 x breakfasts, 10 x lunches, 10 x dinners. Bed and Breakfast in Kathmandu and full board elsewhere.

Flight arrangements

Flight inclusive from price

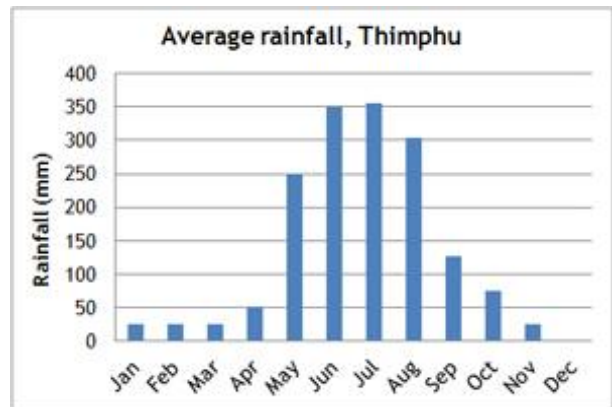
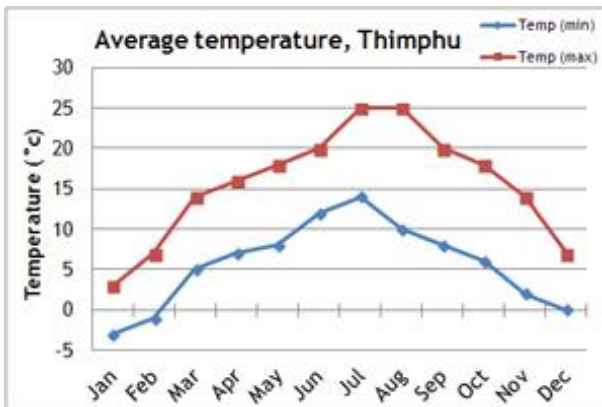
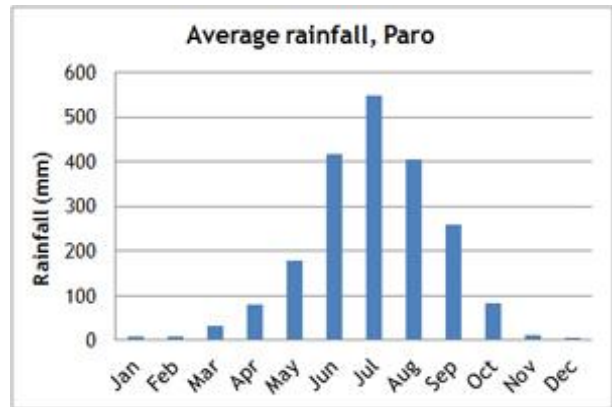
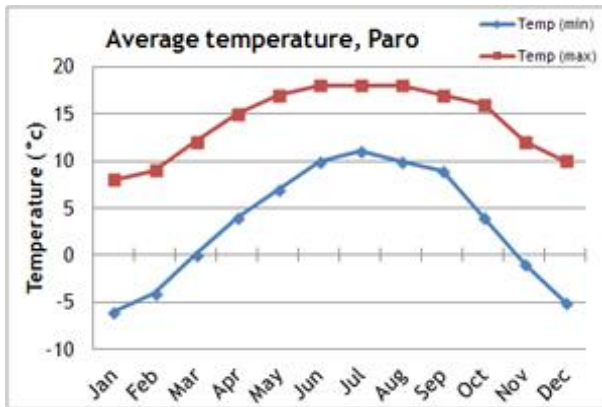
Our 'Flight inclusive from' price is based on the best fare available at the time of printing. As airfares change on a constant basis, this should be used only as a guide price. Rest assured that, at the time of booking, we will endeavour to get the best possible price for the flights you need. Remember, the earlier you book the greater your chances of securing the best fare.

Flight inclusive packages booked through Mountain Kingdoms are protected through our ATOL bonding scheme.

Flight upgrades and regional Airports

Please call us on +44 (0)1453 844400 for flight options from regional UK airports, Business Class upgrades, alternative airlines and stopovers. Please also check our website for the most up to date flight inclusive 'from' prices.

Climate information



Further information

When we receive your booking, we send you a full Trip Dossier which contains details of any visas and vaccinations required, a suggested gear and clothing list and lots of useful information. If you do have queries at this initial stage do call us on 01453 844400 and we will be pleased to offer advice.

The nature of adventure travel

Every effort will be made to keep to this itinerary but we cannot guarantee that things may not change, either before you travel or while you are away. By its very nature, adventure travel involves an element of the unexpected, particularly in more remote areas. A variety of factors such as adverse weather conditions, changes to local schedules and difficulties with transportation can all contribute to the need to make changes to the itinerary, often at the very last minute. Our Operations Manager and your Trip Leader will make every effort to maintain the integrity of the original itinerary and minimise the impact of any changes, but an easy-going and flexible nature is a real asset! Please note that all timings and distances given are approximate.

Extensions

Extending your holiday

If you would like additional inspiration on how or where to extend your holiday please call us on 01453 844400.



Hotel upgrades and extra nights in Bhutan

If you would like to upgrade your hotel during your holiday take a look at our selection of luxury properties in Bhutan such as Uma Paro or the Taj Tashi in Thimphu, you can download a leaflet from our website detailing all hotel options. We can also add additional nights in Bhutan at the start or end of your trip.



Additional accommodation in Nepal

If you would like to extend your stay in Nepal, you can add extra nights at your group tour accommodation or choose from our range of distinctive properties in Pokhara and the Kathmandu area. We can offer luxury resorts, heritage hotels, tranquil lodges and characterful cottages. Our selection includes Dwarika's Resort at Dhulikhel, Pavilions Himalaya at Pokhara, Tiger Mountain Pokhara Lodge and Shivapuri Heights Cottage. Individual extension leaflets for all these options can be downloaded from our website or requested from our office.



Kathmandu Valley sightseeing excursions

We can arrange half day or full day sightseeing tours taking you to the key cultural attractions of central Kathmandu or the Kathmandu Valley including the World Heritage Sites of Bhaktapur and Patan. Your tour will be led by an English speaking guide and you will have a private vehicle and driver.



Wildlife extensions in Nepal - Chitwan, Bardia & Koshi Tappu

Visit Chitwan or Bardia National Parks home to a rich variety of birds and animals including elephant, rhinos, leopard and Bengal tiger. Stay in a comfortable lodge and enjoy a range of wildlife viewing activities. Alternatively visit the renowned Koshi Tappu Wildlife Reserve - one of the finest birdwatching and wildlife areas in all Asia.



Royal Manas National Park, Bhutan

Extend your stay in Bhutan with an extension to the Royal Manas National park, a wonderful birder's paradise close to the Indian border. Our extension package gives you three full days to explore the park and surrounding area, and you will be accompanied throughout by a specialist bird and wildlife guide. We also include all meals, private transport to/from Paro, and hotel accommodation close to the park.

Bumdra Trek, Bhutan

Add an overnight trek to your Bhutan holiday. Follow a trail from Paro to the Bumdra Monastery, high above the Paro Valley then descend to Taktsang Monastery by a little trekked path. Enjoy high mountain views and spend a night camping below beautiful Bumdra Monastery. The fully supported trek includes a guide, trek crew, all camping equipment.

Why book this holiday with Mountain Kingdoms?

- This well-paced holiday offers an excellent balance between sightseeing, walking and travel as well as time to relax and explore at leisure.
- Our itinerary offers an excellent and varied programme of walks and stays in comfortable hotels in Bhutan.
- We include time at a colourful festival - a highlight of any holiday in Bhutan.
- Your tour will be led by professional, English-speaking guides who will be delighted to share their expert knowledge of the history, culture and nature of their home country.
- While in Kathmandu you will stay at award winning Dwarika's Hotel, one of the best hotels in Kathmandu and a unique heritage property.
- We have been pioneering holidays in Bhutan for over 30 years. Our M.D. Steve Berry, is one of the leading authorities on Bhutan in the travel industry and has written two books about his experiences in the Thunder Dragon Kingdom.
- Many members of the Mountain Kingdoms team have travelled extensively in Bhutan. If you have any questions about any aspect of this holiday please don't hesitate to give us a call on 01453 844400 or email info@mountainkingdoms.com.
- Our maximum group size is 12 for this trip. This provides for a genuine small group travel experience and helps reduce the negative aspects often associated with larger groups.
- We offer a flexible service and can extend your holiday with extra hotel nights, upgrades and exciting activities.
- As part of our commitment to 'Tourism Declares a Climate Emergency', we will be carbon-offsetting all international flights booked through us by donating funds to the Ecoan Tree Planting Project in Peru.
- If you wish to fly with a specific airline, from a regional UK airport or on alternative dates to the main group we would be happy to arrange this for you. Please contact our Flights team for flight options, quotes and further information.

If we've tempted you to take your next holiday with us, we advise you to check availability and you can do this via our website: www.mountainkingdoms.com or by calling the team on +44 (0)1453 844400. Bookings can be made online, by phone or by completing a booking form and returning it to us. We can also provisionally hold places if you need time to consider your options.

What our clients say



This was a wonderful trip and an experience I will remember for a long time, particularly the climb up to the Tiger's Nest Monastery! We were very lucky to have Tshering as our tour leader, a very experienced guide and a really nice man. Everything went smoothly, thanks to the hard work he put in behind the scenes. Thanks to Mountain Kingdoms for offering such a good trip.

-Mrs L T, Oxfordshire



Personally the trip exceeded expectations in terms of accommodation, comfort, food etc and every day was just excellent. Bhutan has been a dream for a long time, and I was just in awe of the scenery, the wonderful people and all the special experiences.

-Mrs P, Devon



This trip was well structured to provide a very interesting look at a beautiful country. The balance of culture, hiking and being in nature, culminating in the Paro festival and ascending the Tiger's Nest monastery worked well. The walks were challenging but provided the perfect build up to Tiger's Nest.

- Mrs P H, London

A fantastic and memorable experience which exceeded all my expectations, superbly organised with excellent guides and drivers. A holiday of a lifetime, thank you all so very much.

-Mr R G, Shropshire



Absolutely perfect introduction to Bhutan with a mix of walks, guided tours of temples and dzongs, and a festival. Hotels were of high standard of comfort. Guide was knowledgeable, personable and really made the trip. Even the driving was a fascinating experience.

-Mr R A, Dorset

Bhutan is a magical experience - it surpassed our expectations. Excellent organisation. Superb attention to detail. This is the third time I have travelled with Mountain Kingdoms and every time the trips have been excellent. Mountain Kingdoms are our first choice of company for this type of trip.

-Mr & Mrs S, West Sussex

Mountain Kingdoms - distinctly different

Truly independent

In an age where many so-called 'independent' travel companies have in fact been bought out by multi-national giants, we remain fiercely independent with all the benefits this offers our clients.

Value for money prices with an emphasis on quality

We are not in the business of cutting our itineraries and services to the bone to offer eye-catching cheap prices. We use some of the best airlines, and typically 3 or 4 star hotels in cities. We include the majority of meals and private transport for road travel. We use excellent equipment and appoint well-trained staff and leaders. Last year, over 98% of our clients rated their Mountain Kingdoms holiday as 'excellent' or 'good'. We are members of AITO and bound by their quality charter.

Complete financial security

You can book with us confident that your holiday has full financial protection. Flight inclusive holidays are financially protected by the Civil Aviation Authority under ATOL licence number 2973 and 'Land Only' holidays are covered by a bond secured with ABTOT.

No Surcharge Guarantee

Your peace of mind is important to us so we have a No Surcharge Guarantee on all Land Only and Flight Inclusive bookings. This means that there will be no change to the price of your holiday once we have confirmed your booking, regardless of fluctuations in exchange rates or fuel prices.

Award winning Responsible Tourism

We feel strongly that all our holidays should benefit local communities, protect the environment and respect local traditions, religion and heritage. You can read more about the charities we support and our Responsible Tourism commitments and initiatives on the following page or at www.mountainkingdoms.com.

Genuine small group travel

Almost all of our holidays have a maximum group size of just 12, plus leader. This provides more contact with your leader, readier access to off-the-beaten-path areas, greater interaction with local communities and a reduced environmental impact.

Loyalty Discount

If you have previously travelled with us we recognise your loyalty with a discount on future trips.

Booking your holiday - it couldn't be easier

Once you've chosen your Mountain Kingdoms holiday you can book online, call the office or complete and post a booking form which can be found in our brochure or downloaded from our website. If you would like to hold a place on one of our trips, whilst you make up your mind, please give us a call to make a provisional booking. This is a no-obligation, no-cost booking and we will hold your place until space comes under pressure or we need your decision.

Comprehensive information

When we receive your booking we send you a full trip dossier which contains details of visas and vaccinations required, a suggested gear and clothing list and lots of useful information. In fact, everything you need to know to give you peace of mind and allow you to prepare for your trip of a lifetime.



RESPONSIBLE TOURISM STATEMENT

For almost four decades, Mountain Kingdoms has been offering people the chance to visit amazing places on this extraordinary planet. We now have trips to all corners of the globe but are conscious that our holidays can have a detrimental impact on the world around us and want to do all we can to reduce that.

We have focused our main responsible tourism efforts on reducing the carbon emissions produced by our holidays, and counterbalancing this carbon by supporting carbon offset measures. Here are some of our current and future plans to minimise the impact of our business as a whole.

Carbon offsetting

Since 2007, we have donated a percentage of our client and staff flight costs to the Ecoan tree planting project in Peru. Ecoan are a trusted local NGO who use the funds directly to purchase seedling trees with the long-term goal of restoring 2.5 million acres of Andean land.

Ecoan maintains over 100 tree nurseries across Peru where their tree saplings are grown and then transported to planting sites during the rainy season. They use native trees such as the Polylepis, as these can survive at high altitudes. As well as sequestering carbon, they help protect against soil erosion, landslides and the effects of extreme weather on local crops. As such, they are enormously beneficial to the economic well-being of the surrounding communities. This is very much a community-led conservation project, with the local Quechuan people coming together to plant tens of thousands of saplings in the Andean highlands where they live. During the annual Queuña Raymi (tree festival), over 150,000 native trees can be planted in a single day!

For every person booking a long-haul, flight inclusive holiday with us, Ecoan can purchase and plant 20 trees in Peru, and for short-haul flights, 7 trees. Typically, we send over \$7,000 per year to Ecoan, which is over 7,000 trees.

Reducing carbon emissions

- ✓ We offer the majority of our clients a free, filtered Water-to-Go bottle to help reduce the need for single-use plastic bottles during their travels.
- ✓ We predominantly use locally-owned hotels and guesthouses rather than multinational chains. In some of our destinations, such as Bhutan, we use homestays. Not only does this type of small-sized, locally-owned accommodation have a much-reduced carbon footprint, but it also helps support communities.
- ✓ We evaluate our flights to make sure we are using the most fuel-efficient airlines with the youngest fleets and, where possible, choose direct flights for each trip.
- ✓ We have stopped offering unnecessary optional flights, such as Everest sightseeing. We try to minimise internal flights where possible.
- ✓ We recycle as much of our office waste as possible and have introduced a client portal to reduce paperwork and to make it easier for clients to manage their trips online.

Wider commitment to responsible and sustainable tourism

- ✓ We are signatories to the Tourism Declares a Climate Emergency initiative to stand alongside other like-minded travel companies to initiate best practices to make tourism as sustainable as possible.
- ✓ We will continue to support several charities with whom we have a long-standing relationship, such as Shiva Charity in Nepal.

Over the years, we have given sizeable payments to emergency relief when a disaster has occurred in the countries we operate in. We always try to ensure that these funds go directly to those who need them most to help rebuild their lives.

